

GUBI

GUBI Leather Collection

Chamois



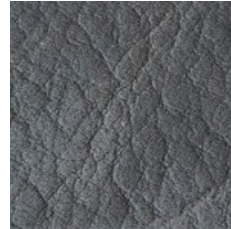
1708 Cuio



1718 Nude



1705 Chalk



1710 Plomo



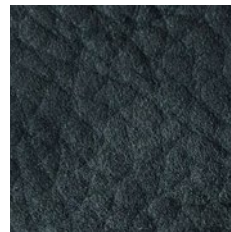
1714 Lucky



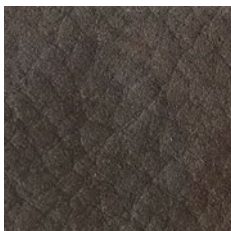
1711 Genere



1706 Concrete



1712 Grafite



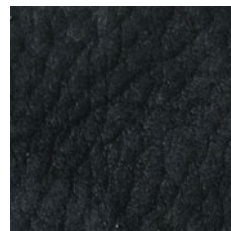
1720 Vision



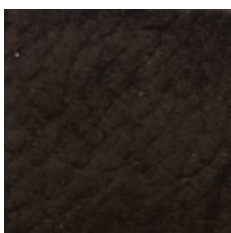
1719 Cangaroo



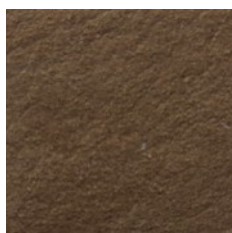
1716 Doeskin



1721 Ematite



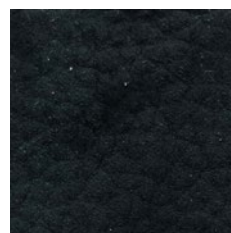
1704 Chocolate



1709 Caramel



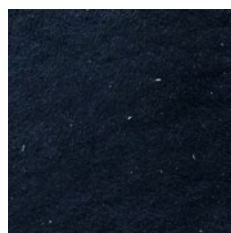
1701 Caqui



1713 Ardesia



1715 Elefant



1703 True Blue

Basic

Type Corrected leather

Thickness 0.9-1.1 mm

Size Average 3.75 m²

Origin India

Tannage Chrome

Dry flexing resistance / number of motions ≥ 20.000 cycles

Fastness to light ≥ 5

Rubbing resistance, dry, 500 cycles ≥ 4

Rubbing resistance, wet, 250 cycles ≥ 3/4

Tear strength ≥ 20

Fire tests -

Tangier

Type Corrected leather

Thickness 1.0-1.2 mm

Size 4.8-5.0 m²

Origin Italy

Tannage Chrome

Dry flexing resistance / number of motions ≥ 30.000 cycles

Fastness to light ≥ 3

Rubbing resistance, dry, 100 cycles ≥ 4

Rubbing resistance, wet, 20 cycles ≥ 4

Tear strength ≥ 20

Fire tests Cigarette test (California)

Chamois

Type Aniline dyed, nubuck finishing

Thickness 1.2 - 1.4 mm

Size Average 5.0 m²

Origin Italy

Tannage Chrome

Dry flexing resistance / number of motions ≥ 50.000 cycles

Fastness to light ≥ 2

Rubbing resistance, dry, 50 cycles ≥ 3

Rubbing resistance, wet, 10 cycles ≥ 3

Tear strength ≥ 20

Fire tests -

Care & Cleaning

Avoid bar soap, saddle soap, leather cleaners, household detergents or chemical products.
Protect from direct sunlight, excessive heat and sharp objects.