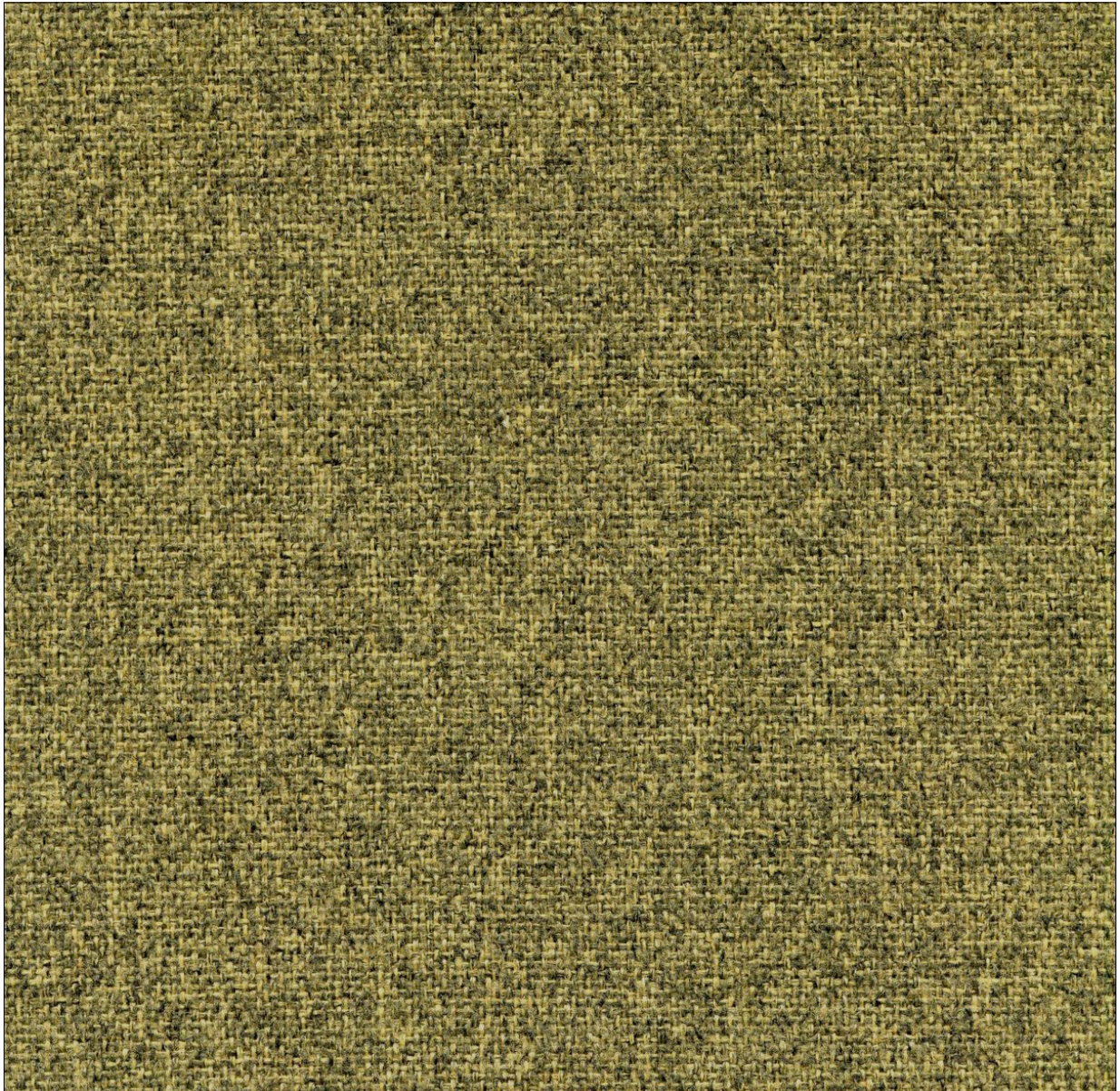


Nemi Melange

cat.B



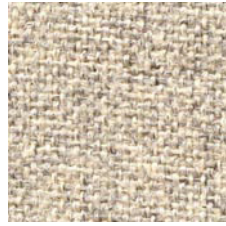


1053

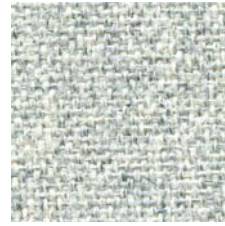
Nemi Melange



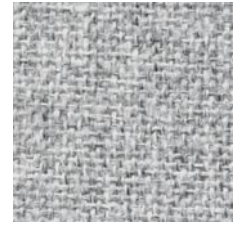
1053



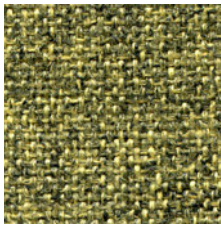
2505



2503



2999



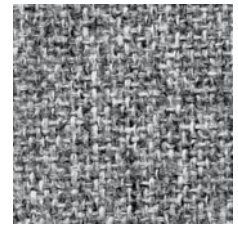
1066



1556



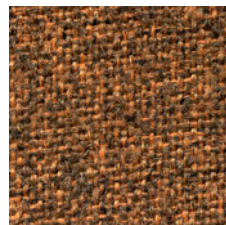
1568



1999



2113



1118



1569



1620



2216



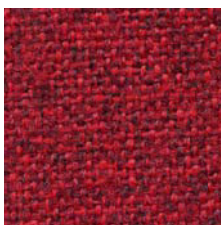
1109



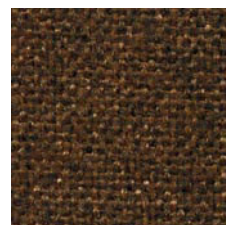
1418



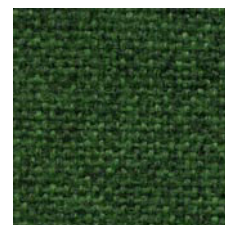
1316



1216



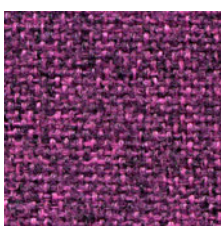
1558



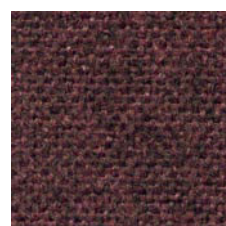
1494



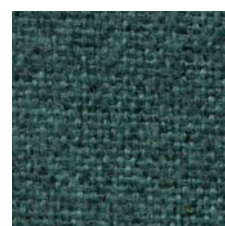
1317



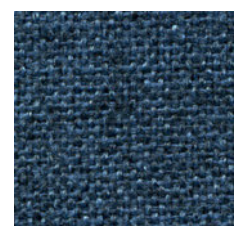
1156



1260



1495



1433



Nemi Melange





Tela melange con mano ed aspetto lana, punta tutto sulla naturalezza questo tessuto studiato appositamente per coniugare prestazioni eccellenti, estetica e colori di tendenza.

Melange canvas with a wool hand and aspect. This fabric, studied to join excellent performances, beauty and trendy colours, aims to the naturalness.



Composizione	100% Poliestere FR (Tr Cs)	
Peso	gr/mtl 405 ± 5%	
Altezza	cm 140 ± 2%	
Lunghezza pezzo	mt 55 ± 5%	
Abrasione	(Martindale) UNI EN ISO 12947:2000 60.000 cicli ± 20%	
Solidità alla luce	(Xenotest) UNI EN ISO 105 B02	6 ± 1
Certificati di	Classe 1 Sipari, Drappeggi, Tendaggi e	
Resistenza al fuoco	Rivestimento Pareti B1 DIN 4102 M1 BS 5852 Crib 5 using a CM Foam 35 kg/cu.m EN 1021 Part.1-2 using a CM Foam 35 kg/cu.m EN 13501-1 ¹² : B-s1, d0 Calif. Bull. 117 June 2013	
	art. Azimut: MED/3.19 MED/3.21: Draperies, Curtains and Bedding components MED annex A.1 item:A.1/3.20 - Upholstered furniture	
Manutenzione	Usare con regolarità l'aspirapolvere a beccuccio liscio, senza spazzolare.	
		
Differenze di colore	Leggere differenze di colore fra una partita e l'altra sono da considerarsi normali.	

Composition	100% Polyester FR (Tr Cs)	
Weight	gr/lm 405 ± 5%	
Width	cm 140 ± 2%	
Piece Length	lm 55 ± 5%	
Abrasion Test	(Martindale) UNI EN ISO 12947:2000 60.000 turns ± 20%	
Lightfastness	(Xenotest) UNI EN ISO 105 B02	6 ± 1
Flammability	Classe 1 Sipari, Drappeggi, Tendaggi e	
Certificates	Rivestimento Pareti B1 DIN 4102 M1 BS 5852 Crib 5 using a CM Foam 35 kg/cu.m EN 1021 Part.1-2 using a CM Foam 35 kg/cu.m EN 13501-1 ¹² : B-s1, d0 Calif. Bull. 117 June 2013	
	art. Azimut: MED/3.19 MED/3.21: Draperies, Curtains and Bedding components MED annex A.1 item:A.1/3.20 - Upholstered furniture	
Care Instructions	Use the vacuum-cleaner with smooth spout regularly, don't brush.	
		
Colour Matching	Slight differences between dyeing lots are considered normal.	

Gebrüder Thonet Vienna GmbH (GTV)
Prinz Eugen Straße 42
1040 Wien, (Austria)
Offices of the trademarks' licensee
Production Furniture International S.p.A
Via Foggia, 23/H - 10152 Torino Italy

www.gebruederthonetvienna.com