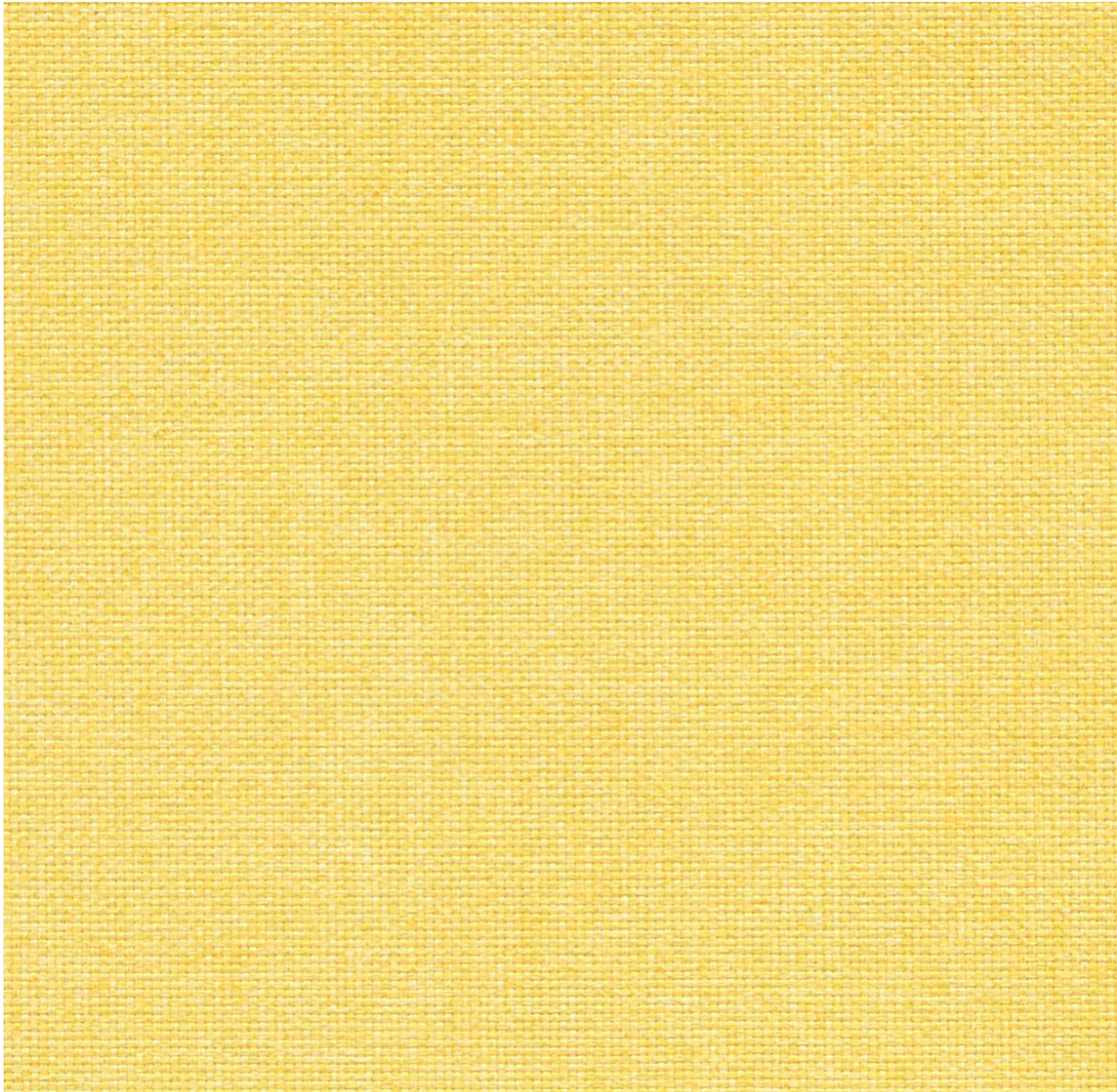


# Convert Mel 4000

cat.A





4055

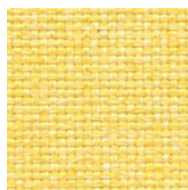


Tessuto  
da materia prima  
riciclata

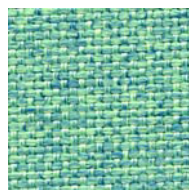




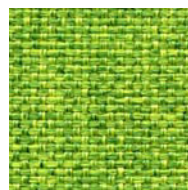
# Convert Mel 4000



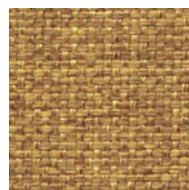
4055



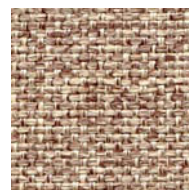
4465



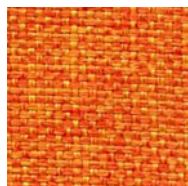
4460



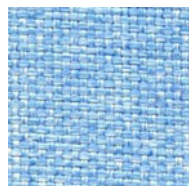
4056



4558



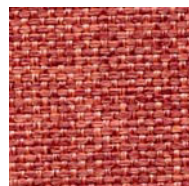
4105



4362



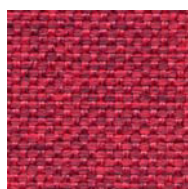
4464



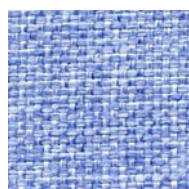
4211



4513



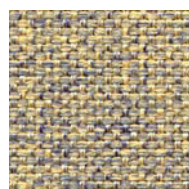
4210



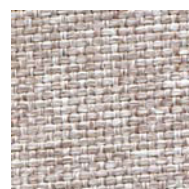
4360



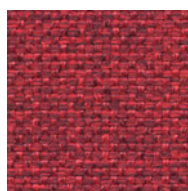
4466



4312



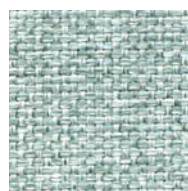
4511



4213



4361



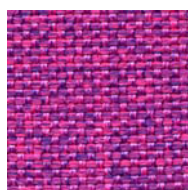
4467



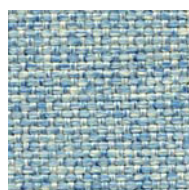
4559



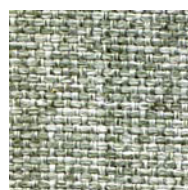
4613



4254



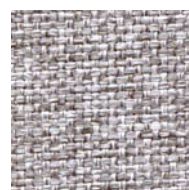
4311



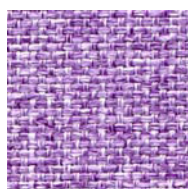
4468



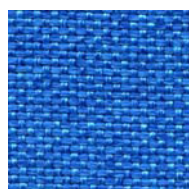
4560



4614



4253



4310



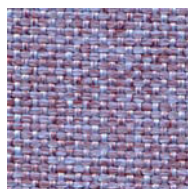
4462



4561



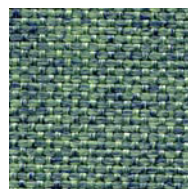
4615



4363



4313



4461



4562



4616








# Convert MeI 4000










E' un tessuto moderno dall'aspetto naturale effetto melange, assolutamente gradevole al tatto richiama i tessuti naturali, realizzato in PL FR intrinsecamente ignifugo soddisfa la maggioranza dei test al Fuoco vigenti. Possibilità di colori speciali bicolori melange, molto versatile ed apprezzato dai progettisti di qualsiasi ambiente.

Modern fabric with natural aspect and melange effect with very soft touch. Fabric 100% inherently PL FR meets all the major fire tests. We have the possibility to make special Bicolors mélange, this fabric can be used in several project for various end use.



<b>Composizione</b>	100% Poliestere FR (riciclato)
<b>Peso</b>	gr/mtl 470 ± 10%
<b>Altezza</b>	cm 140 ± 2%
<b>Lunghezza pezza</b>	mt 55 ± 5%
<b>Abrasione</b>	(Martindale) UNI EN ISO 12947:2000 50.000 cicli ± 20%
<b>Solidità alla luce</b>	(Xenotest) UNI EN ISO 105 B02 6 ± 1
<b>Certificati di</b>	Classe 1 Sipari, Drappeggi, Tendaggi
<b>Resistenza al fuoco</b>	Classe 1 IM - Rapporto di Prova BS 5852 Crib 5 using a CM Foam 35 kg/cu.m B1 DIN 4102 EN 1021 Part.1-2 using a CM Foam 35 kg/cu.m Calif. Bull. 117 June 2013 M1 + NF D 60-013:2006 AM18   <b>art. Azimut:</b> MED/3.19 - MED/3.21: Draperies, Curtains and Bedding components MED Annex A.1 item: A.1/3.20 - Upholstered furniture
<b>Manutenzione</b>	Usare con regolarità l'aspiratore a beccuccio liscio, senza spazzolare.     
<b>Differenze di colore</b>	Leggere differenze di colore fra una partita e l'altra sono da considerarsi normali.

<b>Composition</b>	100% Polyester FR (recycled)
<b>Weight</b>	gr/Im 470 ± 10%
<b>Width</b>	cm 140 ± 2%
<b>Piece Length</b>	Im 55 ± 5%
<b>Abrasion Test</b>	(Martindale) UNI EN ISO 12947:2000 50.000 turns ± 20%
<b>Lightfastness</b>	(Xenotest) UNI EN ISO 105 B02 6 ± 1
<b>Flammability</b>	Classe 1 Sipari, Drappeggi, Tendaggi
<b>Certificates</b>	Classe 1 IM - Rapporto di Prova BS 5852 Crib 5 using a CM Foam 35 kg/cu.m B1 DIN 4102 EN 1021 Part.1-2 using a CM Foam 35 kg/cu.m Calif. Bull. 117 June 2013 M1 + NF D 60-013:2006 AM18   <b>art. Azimut:</b> MED/3.19 - MED/3.21: Draperies, Curtains and Bedding components MED Annex A.1 item: A.1/3.20 - Upholstered furniture
<b>Care Instructions</b>	Use the vacuum-cleaner with smooth spout regularly, don't brush.     
<b>Colour Matching</b>	Slight differences between dyeing lots are considered normal.

Gebrüder Thonet Vienna GmbH (GTV)  
Prinz Eugen Straße 42  
1040 Wien, (Austria)  
Offices of the trademarks' licensee  
Production Furniture International S.p.A  
Via Foggia, 23/H - 10152 Torino Italy

[www.gebruederthonetvienna.com](http://www.gebruederthonetvienna.com)