

Canvas 2	Cat. C
Divina 3	Cat. C
Fuse	Cat. D
Hallingdal 65	Cat. C
Harald 3	Cat. C
Hero	Cat. B
Moss	Cat. C
Novus 1	Cat. E
Pilot	Cat. D
Raas	Cat. C
Remix 3	Cat. B
Safire	Cat. C
San	Cat. C
Savanna	Cat. B
Sonar 3	Cat. E
Steelcut Trio 3	Cat. C
Twill Weave	Cat. C
Vidar 4	Cat. C
Zero	Cat. C
Campas 300	only for Feng



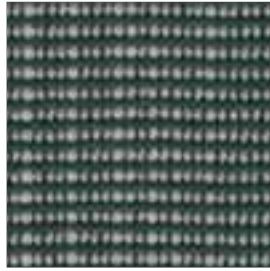
SAHCO

kvadrat

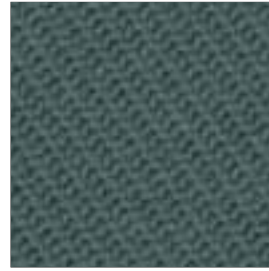




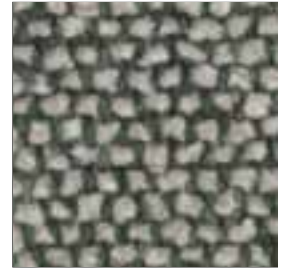
Campas 300 by Kvadrat
Col. 944



Raas by Kvadrat
Col. 942



Twill Weave by Kvadrat
Col. 960



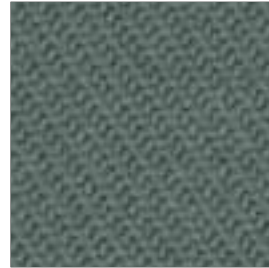
Moss by Sahco
Col. 003



Hero by Kvadrat
Col. 931



Fuse by Kvadrat
Col. 981



Twill Weave by Kvadrat
Col. 940



Pilot by Kvadrat
Col. 772



Sonar 3 by Kvadrat
Col. 934



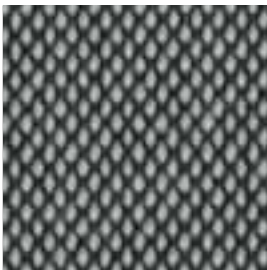
Raas by Kvadrat
Col. 982



Sonar 3 by Kvadrat
Col. 974



Vidar 4 by Kvadrat
Col. 972



Steelcut Trio 3 by Kvadrat
Col. 916



Moss by Sahco
Col. 002



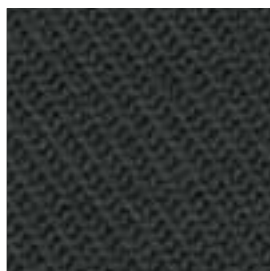
Savanna by Kvadrat
Col. 952



Hero by Kvadrat
Col. 791



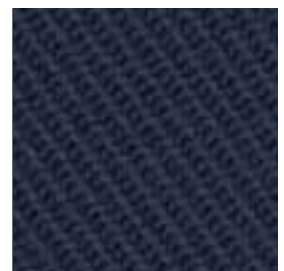
Moss by Sahco
Col. 001



Twill Weave by Kvadrat
Col. 990



Harald 3 by Kvadrat
Col. 823



Twill Weave by Kvadrat
Col. 780



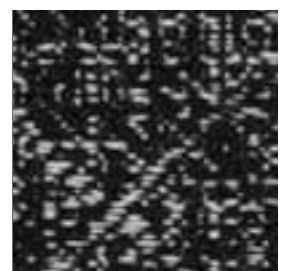
Harald 3 by Kvadrat
Col. 982



Sonar 3 by Kvadrat
Col. 194



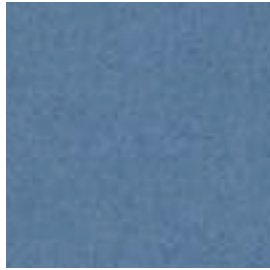
Divina 3 by Kvadrat
Col. 856



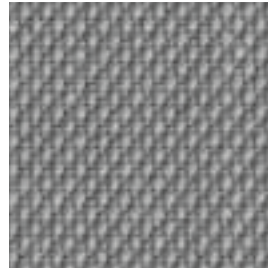
Novus 1 by Kvadrat
Col. 195



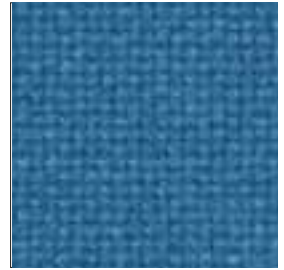
San by Kvadrat
Col. 790



Hero by Kvadrat
Col. 711



Steelcut Trio 3 by Kvadrat
Col. 113



Hallingdal 65 by Kvadrat
Col. 723



Vidar 4 by Kvadrat
Col. 554



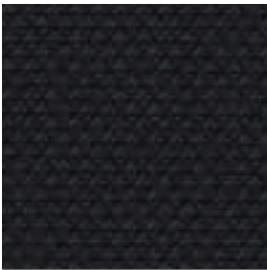
Zero by Sahco
Col. 006



Zero by Sahco
Col. 005



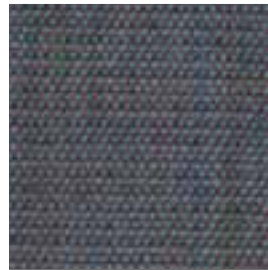
Remix 3 by Kvadrat
Col. 762



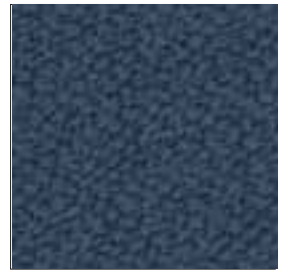
Steelcut Trio 3 by Kvadrat
Col. 195



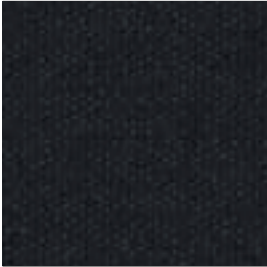
Steelcut Trio 3 by Kvadrat
Col. 713



Canvas 2 by Kvadrat
Col. 734



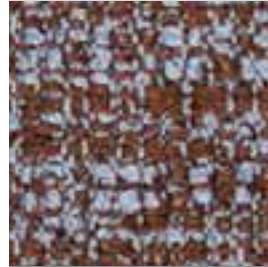
Vidar 4 by Kvadrat
Col. 733



San by Kvadrat
Col. 190



Zero by Sahco
Col. 010



Sonar 3 by Kvadrat
Col. 384



Sonar 3 by Kvadrat
Col. 734



Fuse by Kvadrat
Col. 191



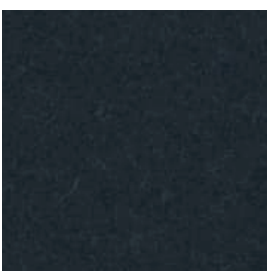
Remix 3 by Kvadrat
Col. 733



Moss by Sahco
Col. 010



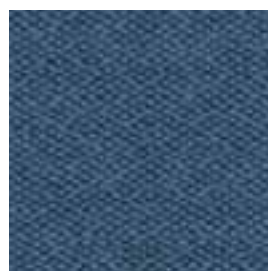
San by Kvadrat
Col. 780



Divina 3 by Kvadrat
Col. 793



Safire by Sahco
Col. 012



San by Kvadrat
Col. 750



Campas 300 by Kvadrat
Col. 794

Divina 3 by Kvadrat Finn Sködt Cat. C

Application Offices, hotels, institutions, domestic use.
Description 100% new wool. Width app. 59 inches (150 cm). Weight app. 840 g/lin.m. Piece dyed. Foreign fibres may occur in light colours. Colour differences may occur.
Abrasion: App. 45,000 rubs acc. to the Martindale method EN ISO 12947.
Lightfastness (ISO) 5-7. **Pilling** (EN ISO) 3. **Fastness to rubbing** (ISO) dry 4-5, wet 3-5.
Sound absorption (EN ISO 354) 0.60/Class C (flat), 0.70/Class C (waved). **Airflow** 678 Pa s/m. **Flame resistance:** AS/NZS 1530.3. ASTM E84 Class A adhered. ASTM E84 Class B unadhered. BS 5852 Crib 5. BS 5852 Part 1. BS 5867 Part 2 Type B. EN 1021-1/2. EN 13501, C-s1, d0 adhered. GB 50222 B1 with treatment. IMO FTP Code 2010:Part 8. NF D 60 013. NFPA 260. NFPA 701 with treatment. SN 198 898 5.3 with treatment. UNI 9175 11M. US Cal. Bull. 117-2013. ÖNORM B1 / Q1. (Copy of test report available).
Care Please see www.kvadrat.dk/care-and-maintenance.

Novus 1 by Kvadrat Raf Simons Cat. E

Application Offices, hotels, institutions, domestic use. Great durability.
Description 91% new wool, worsted. 8% nylon. 1% polyester. Width app. 59 inches (150 cm). Weight app. 690 g/lin.m. Yarn dyed. Colour differences may occur.
Abrasion: App. 90,000 rubs acc. to the Martindale method EN ISO 12947.
Lightfastness (ISO) 6-7. **Pilling** (EN ISO) 4. **Fastness to rubbing** (ISO) dry 3-5, wet 4-5. **Flame resistance:** AS/NZS 1530.3. BS 5852 Crib 5 with treatment. BS 5852 ignition source 3. BS 5852 part 1. EN 1021-1/2. IMO FTP Code 2010:Part 8. SN 198 898 5.3 with treatment. UNI 9175 11M. US Cal. Bull. 117-2013. ÖNORM B1 / Q1. (Copy of test report available).
Care Please see www.kvadrat.dk/care-and-maintenance.

Hallingdal 65 by Kvadrat Nanna Ditzel Cat. C

Application Offices, hotels, institutions, domestic use. Great durability.
Description 90% new wool, worsted, 10% nylon. Width app. 55 inches (140 cm). Weight app. 420 g/lin.m. Material dyed. Colour differences may occur.
Abrasion: App. 100,000 rubs acc. to the Martindale method EN ISO 12947.
Lightfastness (ISO) 5-7. **Pilling** (EN ISO) 4. **Fastness to rubbing** (ISO) dry 4-5, wet 3-5. **Sound absorption** (EN ISO 354) 0.55/Class D (flat), 0.80/Class B (waved). **Airflow** 465 Pa s/m. **Flame resistance:** AS/NZS 1530.3. AS/NZS 3837 Class 2. ASTM E84 class A adhered. ASTM E84 Class A unadhered. BS 5852 Crib 5 with treatment. BS 5852 ignition source 3. BS 5852 part 1. EN 1021-1/2. GB 50222 B1 with treatment. IMO FTP Code 2010:Part 7 with treatment. IMO FTP Code 2010:Part 8. NF D 60 013. NFPA 260. SN 198 898 5.3 with treatment. UNI 9175 11M. US Cal. Bull. 117-2013. ÖNORM B1 / Q1. (Copy of test report available).
Care Please see www.kvadrat.dk/care-and-maintenance.

San by Kvadrat Louise Sigvardt Cat. C

Application Offices, hotels, institutions, domestic use. Great durability.
Description 92% new wool, worsted, 8% nylon. Width app. 55 inches (140 cm). Weight app. 370 g/lin.m. Yarn dyed. Foreign fibres may occur in light colours. Colour differences may occur.
Abrasion: App. 60,000 rubs acc. to the Martindale method EN ISO 12947.
Lightfastness (ISO) 5-7. **Pilling** (EN ISO) 3-4. **Fastness to rubbing** (ISO) dry 4-5, wet 3-5. **Sound absorption** (EN ISO 354) 0.50/Class D (flat), 0.75/Class C (waved). **Airflow** 314 Pa s/m. **Flame resistance:** AS/NZS 3837 Class 2. BS 5852 Crib 5 with treatment. BS 5852 part 1. EN 1021-1/2. IMO FTP Code 2010:Part 8. NF D 60 013. SN 198 898 5.3 with treatment. UNI 9175 11M. US Cal. Bull. 117-2013. (Copy of test report available).
Care Please see www.kvadrat.dk/care-and-maintenance.

Canvas 2 by Kvadrat Giulio Ridolfo Cat. C

Please see description on Black/White Card

Harald 3 by Kvadrat Raf Simons And Fanny Aronsen Cat. C

Please see description on Black/White Card

Moss by Sahco Vincent Van Duysen Cat. C

Please see description on Black/White Card

Savanna by Kvadrat Aggebo & Henriksen Cat. B

Please see description on Black/White Card

Steelcut Trio 3 by Kvadrat Frans Dijkmeijer and Giulio Ridolfo Cat. C

Please see description on Black/White Card

Vidar 4 by Kvadrat Raf Simons And Fanny Aronsen Cat. C

Please see description on Black/White Card

Campas 300 by Kvadrat Finn Sködt

Please see description on Red/Yellow Card

Hallingdal 65 Kvadrat Nanna Ditzel Cat. C

Application Offices, hotels, institutions, domestic use. Great durability.
Description 70% new wool, 30% viscose. Width 51 inches (130 cm). Weight app. 795 g/lin.m. Material dyed. Foreign fibre may occur in light colours. Colour differences may occur.
Abrasion: App. 100,000 rubs acc. to the Martindale method EN ISO 12947.
Lightfastness (ISO) 5-7. **Pilling** (EN ISO) 3-4. **Fastness to rubbing** (ISO) dry 4-5, wet 3-5. **Sound absorption** (EN ISO 354) 0.45/Class D (flat), 0.70/Class C (waved). **Airflow** 182 Pa s/m. **Flame resistance:** AS/NZS 1530.3. AS/NZS 3837 Class 2. ASTM E84 class A adhered. BS 5852 Crib 5. BS 5852 part 1. EN 1021-1/2. GB 50222 B1 with treatment. IMO FTP Code 2010:Part 8. NF D 60 013. NFPA 260. SN 198 898 5.3 with treatment. UNI 9175 11M. US Cal. Bull. 117-2013. ÖNORM B1 / Q1. (Copy of test report available).
Care Please see www.kvadrat.dk/care-and-maintenance.

Pilot by Kvadrat Raf Simons Cat. D

Application Offices, hotels, institutions, domestic use. Great wearability.
Description 82% new wool, worsted. 10% polyester. 8% nylon. Width 55 inches (140 cm). Weight app. 770 g/lin.m. Yarn dyed. Colour differences may occur.
Abrasion: App. 70,000 rubs acc. to the Martindale method EN ISO 12947.
Lightfastness (ISO) 7. **Pilling** (EN ISO) 4. **Fastness to rubbing** (ISO) dry 4-5, wet 3-5. **Flame resistance:** AS/NZS 3837 Class 2. BS 5852 Crib 5 with treatment. BS 5852 part 1. EN 1021-1/2. IMO FTP Code 2010:Part 8. NF D 60 013. UNI 9175 11M. US Cal. Bull. 117-2013. ÖNORM B1 / Q1. (Copy of test report available).
Care Please see www.kvadrat.dk/care-and-maintenance.

Safire by Sahco Cat. C

Application Upholstery
Description 43% viscose, 17% acrylic, 15% new wool, 9% cotton, 8% linen, 8% polyester. Width app. 55 inches (140 cm). Weight app. 1010 g/lin.m. Colour differences may occur.
Abrasion: App. 40,000 rubs acc. to the Martindale method EN ISO 12947. Shrinkage app. 2%. **Lightfastness** (ISO) 6. **Pilling** (EN ISO) 3. **Flame resistance:** BS 5852 Crib 5 with treatment. BS 5852 part 1. EN 1021-1/2. (Copy of test report available).
Care Please see www.kvadrat.dk/care-and-maintenance.

Fuse by Kvadrat Raf Simons Cat. D

Please see description on Black/White Card

Hero by Kvadrat Patricia Urquiola Cat. B

Please see description on Black/White Card

Raas by Kvadrat Doshi Levien Cat. C

Please see description on Black/White Card

Sonar 3 by Kvadrat Raf Simons Cat. E

Please see description on Black/White Card

Twill Weave by Kvadrat Jonathan Olivares Cat. C

Please see description on Black/White Card

Zero by Sahco Cat. C

Please see description on Black/White Card