

Molly 2 Cat. B
Revive Cat.B
Re-Wool Cat. B
Patio Outdoor Cat. B



Molly 2 Col. 194



Molly 2 Col. 170



Molly 2 Col. 152



Molly 2 Col. 164



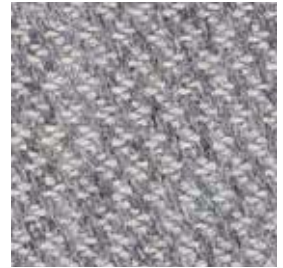
Molly 2 Col. 112



Molly 2 Col. 116



Molly 2 Col. 122



Molly 2 Col. 154



Molly 2 Col. 114



Molly 2 Col. 166



Molly 2 Col. 196



Re-wool Col. 558



Re-wool Col. 378



Re-wool Col. 218



Re-wool Col. 458



Re-wool Col. 128



Re-wool Col. 408



Re-wool Col. 868



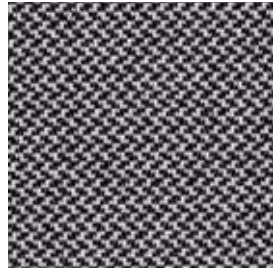
Re-wool Col. 828



Re-wool Col. 158



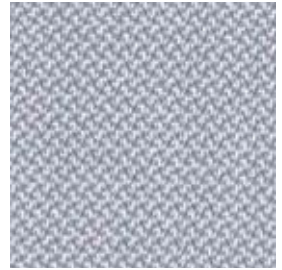
Revive 1 Col. 284



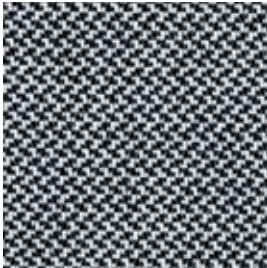
Revive 1 Col. 164



Revive 1 Col. 454



Revive 1 Col. 144



Revive 1 Col. 154



Revive 1 Col. 194



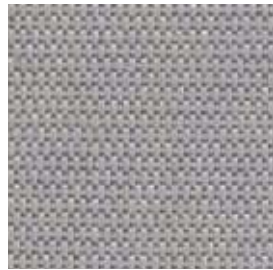
Revive 1 Col. 974



Revive 1 Col. 944



Revive 1 Col. 184



Patio Col. 150



Patio Col. 210



Patio Col. 340



Patio Col. 370



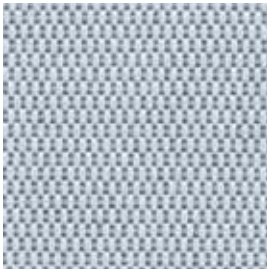
Patio Col. 230



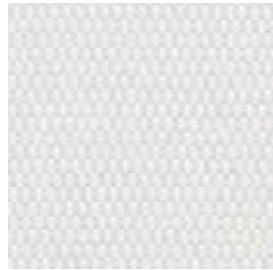
Patio Col. 110



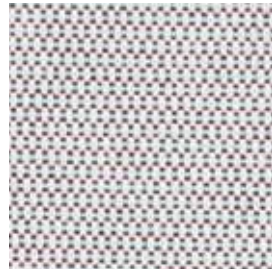
Patio Col. 170



Patio Col. 140



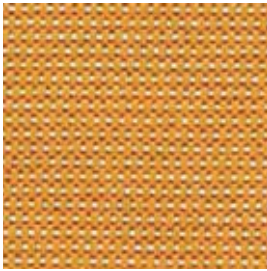
Patio Col. 200



Patio Col. 220



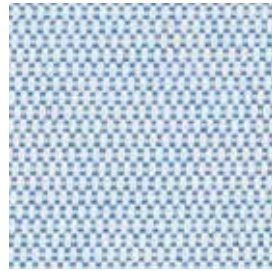
Patio Col. 970



Patio Col. 450



Patio Col. 780



Patio Col. 730



Patio Col. 570

Molly 2 Designed by Åsa Pärson

Application Offices, hotels, institutions, domestic use. Great durability.

Description 100% new wool, worsted. Width app. 55 inches (140 cm). Weight app. 690 g/lin.m, 22.1 oz/ly. The fabric is made of undyed wool fibres; hence colour differences will occur.

Abrasion: App. 75-100,000 rubs, depending on colour, acc. to the Martindale method EN ISO 12947. **Lightfastness** (ISO) 6-7, colour 110 4-5. **Pilling** (EN ISO) 3-4. **Fastness to rubbing** (ISO) dry 4-5, wet 4-5. **Flame resistance:** BS 5852 Crib 5 with treatment. BS 5852 part 1. EN 1021-1/2. IMO FTP Code 2010:Part 8. NF D 60 013. NFPA 260. UNI 9175 1IM. US Cal. Bull. 117-2013. ÖNORM B1 / Q1. (Copy of test report available).

Care Please see www.kvadrat.dk/care-and-maintenance.

Re-wool Designed by Margrethe Odgaard

Application Offices, hotels, institutions, domestic use. Great durability.

Description 45% recycled wool, 45% new wool, worsted, 10% nylon. Width app. 55 inches (140 cm). Weight app. 540 g/lin.m, 17.3 oz/ly. Yarn dyed. Colour differences will occur.

Abrasion: App. 100,000 rubs acc. to the Martindale method EN ISO 12947. **Lightfastness** (ISO) 5-7. **Pilling** (EN ISO) 4. **Fastness to rubbing** (ISO) dry 4-5, wet 4-5. **Sound absorption** (EN ISO 354) 0.50/Class D (flat), 0.75/Class C (waved).

Airflow 258 Pa s/m. **Flame resistance:** AS/NZS 1530.3. AS/NZS 3837 Class 2. BS 5852 Crib 5 with treatment. BS 5852 ignition source 3. BS 5852 part 1. EN 1021-1/2. IMO FTP Code 2010:Part 8. NF D 60 013. SN 198 898 5.3 with treatment. UNI 9175 1IM. US Cal. Bull. 117-2013. ÖNORM B1 / Q1. (Copy of test report available).

Care Please see www.kvadrat.dk/care-and-maintenance.

Revive 1 Designed by Georgina Wright

Application Offices, hotels, institutions, domestic use. Great durability. In accordance with California AB2998 or similar regulation in other states of North America, this product should not be used for residential upholstery in USA.

Description 100% recycled polyester FR. Width app. 55 inches (140 cm). Weight app. 13.5 oz/ly (420 g/lin.m). Yarn dyed. Colour differences may occur.

Abrasion: App. 60,000 rubs acc. to the Martindale method EN ISO 12947.

Lightfastness (ISO) 5-7. **Pilling** (EN ISO) 4-5. **Fastness to rubbing** (ISO) dry 5, wet 4-5. **Sound absorption** (EN ISO 354) 0.55/Class D (flat), 0.80/Class B (waved).

Airflow 597 Pa s/m. **Flame resistance:** AS/NZS 3837 Class 1. BS 5852 Crib 5 with treatment. BS 5852 ignition source 3. BS 5852 Part 1 with treatment. DIN 4102 B1. EN 1021-1/2. GB 50222 B1 with treatment. IMO FTP Code 2010:Part 8. NF D 60 013 with treatment. NFPA 701. SN 198 898 5.3 with treatment. UNI 9175 1IM. UNI 9177 Classe 1. US Cal. Bull. 117-2013. ÖNORM B1 / Q1. (Copy of test report available).

Care Please see www.kvadrat.dk/care-and-maintenance.

Patio Outdoor Designed by Karina Nielsen Rios

Application Out- and indoor upholstery for both domestic and public decoration. Mildew, chlorine, seawater and UV resistant. In accordance with California AB2998 or similar regulation in other states of North America, this product should not be used for residential upholstery in USA.

Description 100% Trevira CS. Fluorocarbon-free water repellent finish. Width app. 55 inches (140 cm). Weight app. 18 oz/ly (560 g/lin.m). Yarn dyed. Colour differences may occur.

Abrasion: App. 50,000 rubs acc. to the Martindale method EN ISO 12947.

Lightfastness (ISO) 7. Fastness to weathering (ISO) 6-7. **Pilling** (EN ISO) 4-5.

Fastness to rubbing (ISO) dry 4-5, wet 4-5. Spray test (EN) 3. Resistant to visible soiling (BS) min. 4. **Sound absorption** (EN ISO 354) 0.50/Class D (flat),

0.85/Class B (waved). **Airflow** 3086 Pa s/m. **Flame resistance:** AS/NZS 3837 Class 1. ASTM E84 class A. BS 5852 Crib 5. BS 5852 ignition source 3. BS 5852 part 1 with treatment. DIN 4102 B1. EN 1021-1/2. IMO FTP Code 2010:Part 8. NF D 60 013. NF P 92 507 M1. NFPA 701. UNI 9175 1IM. UNI 9177 classe 1. US Cal. Bull. 117-2013. ÖNORM B1 / Q1. (Copy of test report available).

Care Please see www.kvadrat.dk/care-and-maintenance.



The mark of responsible forestry