

Canvas 2 Cat. C  
Fuse Cat. D  
Harald 3 Cat. C  
Hero Cat. B  
Moss Cat. C  
Raas Cat. C  
Relate Cat. B  
Savanna Cat. B  
Sonar 3 Cat. E  
Steelcut 2 Cat. C  
Steelcut Trio 3 Cat. C  
Twill Weave Cat. C  
Vidar 4 Cat. C  
Zero Cat. C  
Campas 300 only for Feng



SAHCO

**kvadrat**

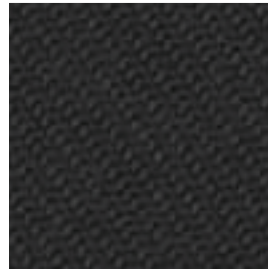




Hero by Kvadrat  
Col. 191



Vidar 4 by Kvadrat  
Col. 133



Twill Weave by Kvadrat  
Col. 190



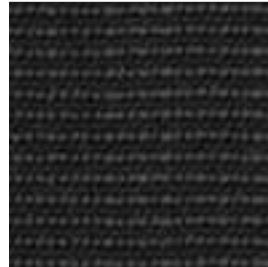
Hero by Kvadrat  
Col. 101



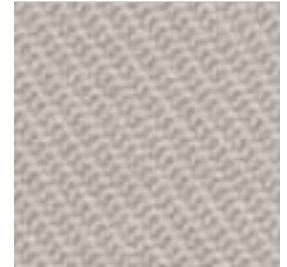
Sonar 3 by Kvadrat  
Col. 173



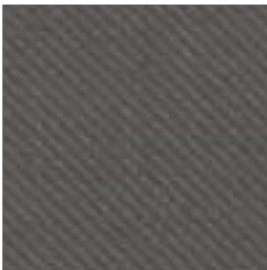
Harald 3 by Kvadrat  
Col. 133



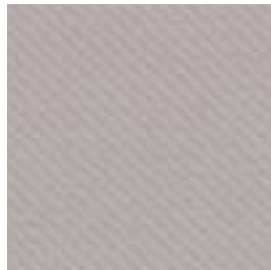
Raas by Kvadrat  
Col. 182



Twill Weave by Kvadrat  
Col. 110



Relate by Kvadrat  
Col. 161



Relate by Kvadrat  
Col. 101



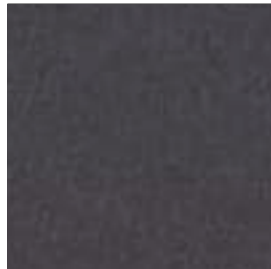
Moss by Sahco  
Col. 005



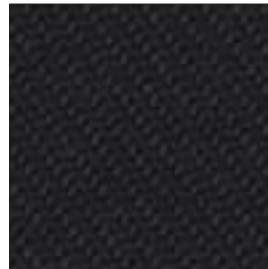
Hero by Kvadrat  
Col. 211



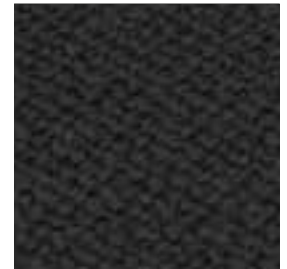
Harald 3 by Kvadrat  
Col. 283



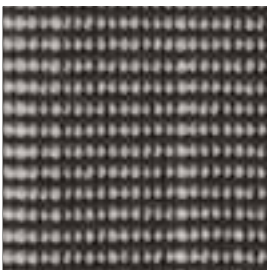
Hero by Kvadrat  
Col. 181



Twill Weave by Kvadrat  
Col. 790



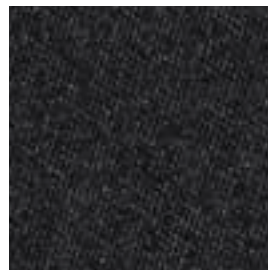
Vidar 4 by Kvadrat  
Col. 182



Raas by Kvadrat  
Col. 142



Hero by Kvadrat  
Col. 151



Campas 300 by Kvadrat  
Col. 194



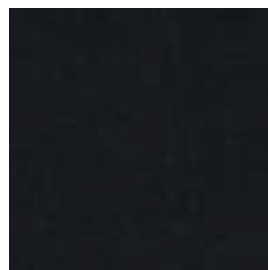
Moss by Kvadrat  
Col. 011



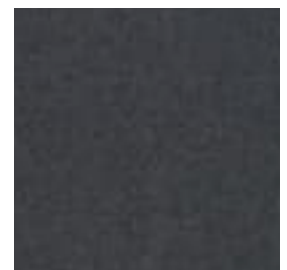
Savanna by Kvadrat  
Col. 122



Savanna by Kvadrat  
Col. 152



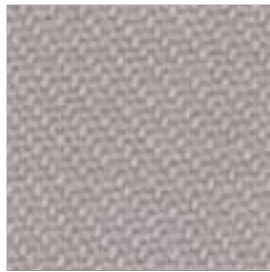
Harald 3 by Kvadrat  
Col. 182



Hero by Kvadrat  
Col. 991



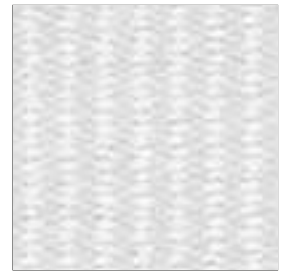
Canvas 2 by Kvadrat  
Col. 114



Twill Weave by Kvadrat  
Col. 120



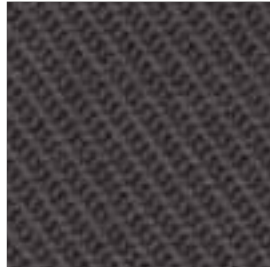
Steelcut Trio 3 by Kvadrat  
Col. 124



Fuse by Kvadrat  
Col. 121



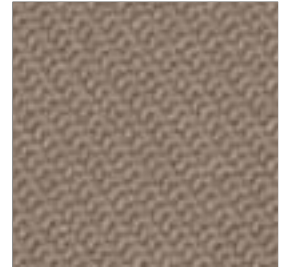
Savanna by Kvadrat  
Col. 242



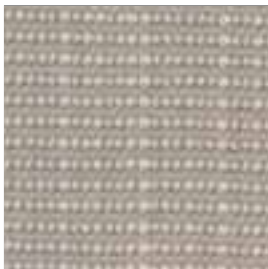
Twill Weave by Kvadrat  
Col. 160



Harald 3 by Kvadrat  
Col. 242



Twill Weave by Kvadrat  
Col. 230



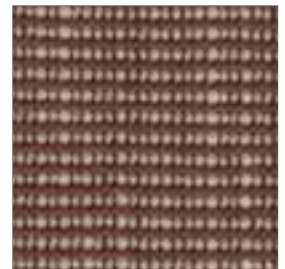
Raas by Kvadrat  
Col. 112



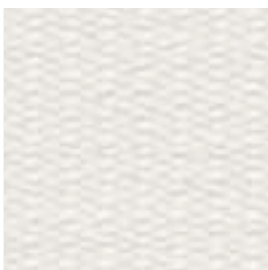
Zero by Sahco  
Col. 012



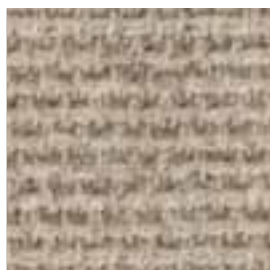
Zero by Sahco  
Col. 009



Raas by Kvadrat  
Col. 462



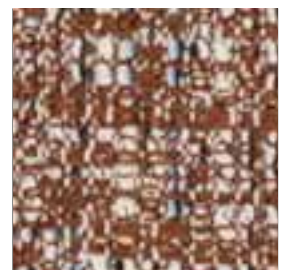
Fuse by Kvadrat  
Col. 111



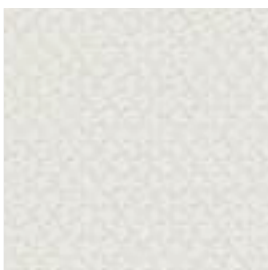
Savanna by Kvadrat  
Col. 202



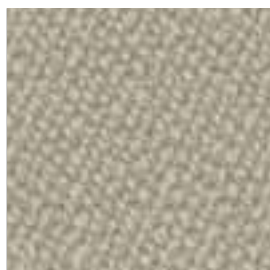
Savanna by Kvadrat  
Col. 622



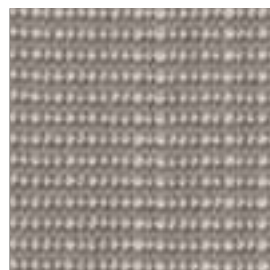
Sonar 3 by Kvadrat  
Col. 374



Steelcut 2 by Kvadrat  
Col. 220



Vidar 4 by Kvadrat  
Col. 146



Raas by Kvadrat  
Col. 122



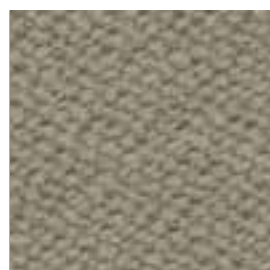
Vidar 4 by Kvadrat  
Col. 333



Harald 3 by Kvadrat  
Col. 123



Canvas 2 by Kvadrat  
Col. 124



Vidar 4 by Kvadrat  
Col. 222



Fuse by Kvadrat  
Col. 351

**Canvas 2** by Kvadrat Giulio Ridolfo Cat. C

**Application** Offices, hotels, institutions, domestic use. Great durability.  
**Description** 90% new wool, worsted, 10% nylon. Width app. 55 inches (140 cm). Weight app. 480 g/lin.m. Material dyed. Colour differences may occur.  
**Abrasion:** App. 100,000 rubs acc. to the Martindale method EN ISO 12947.  
**Lightfastness (ISO) 5-6. Pilling (EN ISO) 4. Fastness to rubbing (ISO) dry 4-5, wet 4-5. Sound absorption (EN ISO 354) 0.60/Class C (flat), 0.80/Class B (waved). Airflow 849 Pa s/m. Flame resistance:** AS/NZS 1530.3. BS 5852 Crib 5 with treatment. BS 5852 ignition source 3. BS 5852 Part 1. EN 1021-1/2. GB 50222 B1 with treatment. IMO FTP Code 2010:Part 8. NF D 60 013. NFPA 260. SN 198 898 5.3 with treatment. UNI 9175 11M. US Cal. Bull. 117-2013. ÖNORM B1 / Q1. (Copy of test report available).  
**Care** Please see [www.kvadrat.dk/care-and-maintenance](http://www.kvadrat.dk/care-and-maintenance).

**Harald 3** by Kvadrat Raf Simons And Fanny Aronsen Cat. C

**Application** Upholstery for both domestic and contract use.  
**Description** 100% cotton. Width app. 55 inches (140 cm). Weight app. 520 g/lin.m. Piece dyed. Colour differences may occur.  
**Abrasion:** App. 100,000 rubs acc. to the Martindale method EN ISO 12947.  
**Lightfastness (ISO) 5-6. Pilling (EN ISO) 4-5. Fastness to rubbing (ISO) dry 4-5, wet 3-5. Sound absorption (EN ISO 354) 0.50/Class D (flat), 0.65/Class C (waved). Airflow 2809 Pa s/m. Flame resistance:** AS/NZS 1530.3. AS/NZS 3837 Class 1. EN 1021-1. (Copy of test report available).  
**Care** Please see [www.kvadrat.dk/care-and-maintenance](http://www.kvadrat.dk/care-and-maintenance).

**Moss** by Sahco Vincent Van Duysen Cat. C

**Application** Upholstery  
**Description** 52% cotton, 22% viscose, 14% acrylic, 6% linen, 3% nylon, 3% polyester. Width app. 54 inches (138 cm). Weight app. 920 g/lin.m. Colour differences may occur.  
**Abrasion:** App. 50,000 rubs acc. to the Martindale method EN ISO 12947. Shrinkage app. 2%. **Lightfastness (ISO) 5-7. Pilling (EN ISO) 4-5. Flame resistance:** BS 5852 Crib 5 with treatment. BS 5852 part 1. EN 1021-1/2. (Copy of test report available).  
**Care** Please see [www.kvadrat.dk/care-and-maintenance](http://www.kvadrat.dk/care-and-maintenance).

**Relate** by Kvadrat Patricia Urquiola Cat. B

**Application** Offices, hotels, institutions, domestic use. Great durability. In accordance with California AB2998 or similar regulation in other states of North America, this product should not be used for residential upholstery in USA.  
**Description** 100% Trevira CS. Width app. 55 inches (140 cm). Weight app. 450 g/lin.m. Yarn dyed. Colour differences may occur.  
**Abrasion:** App. 80,000 rubs acc. to the Martindale method. EN ISO 12947. **Lightfastness (ISO) 5-7. Pilling (EN ISO) 4-5. Fastness to rubbing (ISO) dry 4-5, wet 4-5. Sound absorption (EN ISO 354) 0.50/Class D (flat), 0.70/Class C (waved). Airflow 2241 Pa s/m. Flame resistance:** AS/NZS 3837 Class 2. ASTM E84 class A. ASTM E84 class B adhered. BS 5852 Crib 5. BS 5852 part 1 with treatment. DIN 4102 B1. EN 1021-1/2. EN 13501 B-s1, d0. IMO FTP Code 2010:Part 8. NF D 60 013. NF P 92 507 M1. NFPA 701. SN 198 898 5.2. UNI 9175 11M. UNI 9177 class 1. US Cal. Bull. 117-2013. ÖNORM B1 / Q1. (Copy of test report available).  
**Care** Please see [www.kvadrat.dk/care-and-maintenance](http://www.kvadrat.dk/care-and-maintenance).

**Sonar 3** by Kvadrat Raf Simons Cat. E

**Application** Upholstery for both domestic and contract use.  
**Description** 59% new wool. 25% viscose. 9% linen. 5% nylon. 2% polyester. Width 59 inches (150 cm). Weight app. 770 g/lin.m. Yarn dyed. Colour differences may occur.  
**Abrasion:** App. 20,000 rubs acc. to the Martindale method EN ISO 12947.  
**Lightfastness (ISO) 6-7. Pilling (EN ISO) 3-4. Fastness to rubbing (ISO) dry 4-5, wet 3-5. Flame resistance:** AS/NZS 3837 Class 2. BS 5852 Crib 5 with treatment. BS 5852 part 1. EN 1021-1/2. IMO FTP Code 2010:Part 8. UNI 9175 11M. US Cal. Bull. 117-2013 (Copy of test report available).  
**Care** Please see [www.kvadrat.dk/care-and-maintenance](http://www.kvadrat.dk/care-and-maintenance).

**Steelcut Trio 3** by Kvadrat Frans Dijkmeijer and Giulio Ridolfo Cat. C

**Application** Offices, hotels, institutions, domestic use. Great durability.  
**Description** 90% new wool, worsted, 10% nylon. Width app. 55 inches (140 cm). Weight app. 770 g/lin.m. Yarn dyed. Colour differences may occur.  
**Abrasion:** App. 100,000 rubs acc. to the Martindale method EN ISO 12947.  
**Lightfastness (ISO) 5-7. Pilling (EN ISO) 4. Fastness to rubbing (ISO) dry 4-5, wet 3-5. Sound absorption (EN ISO 354) 0.70/Class C (flat), 0.95/Class A (waved). Airflow 910 Pa s/m. Flame resistance:** AS/NZS 1530.3. AS/NZS 3837 Class 2. ASTM E84 class B adhered. ASTM E84 Class B unadhered. BS 5852 Crib 5 with treatment. BS 5852 ignition source 3. BS 5852 part 1. EN 1021-1/2. GB 50222 B1 with treatment. IMO FTP Code 2010:Part 8. NF D 60 013. NFPA 260. SN 198 898 5.3 with treatment. UNI 9175 11M. US Cal. Bull. 117-2013. ÖNORM B1 / Q1. (Copy of test report available).  
**Care** Please see [www.kvadrat.dk/care-and-maintenance](http://www.kvadrat.dk/care-and-maintenance).

**Vidar 4** by Kvadrat Raf Simons And Fanny Aronsen Cat. C

**Application** Offices, hotels, institutions, domestic use. Great durability.  
**Description** 94% new wool. 6% nylon. Width app. 55 inches (140 cm). Weight app. 770 g/lin.m. Yarn dyed. Foreign fibres may occur in light colours. Colour differences may occur.  
**Abrasion:** App. 100,000 rubs acc. to the Martindale method EN ISO 12947.  
**Lightfastness (ISO) 5-7. Pilling (EN ISO) 4. Fastness to rubbing (ISO) dry 4-5, wet 3-5. Flame resistance:** AS/NZS 3837 Class 2. BS 5852 Crib 5 with treatment. BS 5852 Part 1. EN 1021-1/2. GB 50222 B1 with treatment. IMO FTP Code 2010:Part 8. NF D 60 013. NFPA 260. SN 198 898 5.3 with treatment. UNI 9175 11M. US Cal. Bull. 117-2013. (Copy of test report available).  
**Care** Please see [www.kvadrat.dk/care-and-maintenance](http://www.kvadrat.dk/care-and-maintenance).

**Fuse** by Kvadrat Raf Simons Cat. D

**Application** Offices, hotels, institutions, domestic use. Great durability.  
**Description** 65% new wool, worsted. 23% cotton. 8% viscose. 4% nylon. Width app. 56 inches (143 cm). Weight app. 810 g/lin.m. Length striped. Yarn dyed. Foreign fibres may occur in light colours. Colour differences may occur.  
**Abrasion:** App. 100,000 rubs acc. to the Martindale method EN ISO 12947.  
**Lightfastness (ISO) 5-7. Pilling (EN ISO) 3-4. Fastness to rubbing (ISO) dry 4-5, wet 3-5. Flame resistance:** BS 5852 Crib 5. BS 5852 Part 1. EN 1021-1/2. IMO FTP Code 2010:Part 8. NF D 60 013. UNI 9175 11M. US Cal. Bull. 117-2013. ÖNORM B1 / Q1 (Copy of test report available).  
**Care** Please see [www.kvadrat.dk/care-and-maintenance](http://www.kvadrat.dk/care-and-maintenance).

**Hero** by Kvadrat Patricia Urquiola Cat. B

**Application** Offices, hotels, institutions, domestic use.  
**Description** 96% new wool, 4% nylon. Width app. 55 inches (140 cm). Weight app. 580 g/lin.m. Piece dyed. Foreign fibres may occur in light colours. Colour differences may occur.  
**Abrasion:** App. 45,000 rubs acc. to the Martindale method EN ISO 12947.  
**Lightfastness (ISO) 5-7. Pilling (EN ISO) 3-4. Fastness to rubbing (ISO) dry 4-5, wet 4-5. Sound absorption (EN ISO 354) 0.55/Class D (flat), 0.75/Class C (waved). Airflow 410 Pa s/m. Flame resistance:** AS/NZS 3837 Class 2. BS 5852 Crib 5 with treatment. BS 5852 part 1. EN 1021-1/2. IMO FTP Code 2010:Part 7 with treatment. IMO FTP Code 2010:Part 8. NF D 60 013. NFPA 701 with treatment. SN 198 898 5.3 with treatment. UNI 9175 11M. US Cal. Bull. 117-2013. (Copy of test report available).  
**Care** Please see [www.kvadrat.dk/care-and-maintenance](http://www.kvadrat.dk/care-and-maintenance).

**Raas** by Kvadrat Doshi Levien Cat. C

**Application** Offices, hotels, institutions, domestic use. Great durability.  
**Description** 92% new wool, worsted, 8% nylon. Width app. 56 inches (142 cm). Weight app. 770 g/lin.m. Yarn dyed. Colour differences may occur.  
**Abrasion:** App. 100,000 rubs acc. to the Martindale method EN ISO 12947.  
**Lightfastness (ISO) 6-7. Pilling (EN ISO) 4-5. Fastness to rubbing (ISO) dry 4-5, wet 4-5. Sound absorption (EN ISO 354) 0.60/Class C (flat), 0.85/Class B (waved). Airflow 2609 Pa s/m. Flame resistance:** AS/NZS 3837 Class 3. BS 5852 Crib 5 with treatment. BS 5852 ignition source 3. BS 5852 part 1. EN 1021-1/2. IMO FTP Code 2010:Part 8. NF D 60 013. SN 198 898 5.3 with treatment. UNI 9175 11M. US Cal. Bull. 117-2013. ÖNORM B1 / Q1. (Copy of test report available).  
**Care** Please see [www.kvadrat.dk/care-and-maintenance](http://www.kvadrat.dk/care-and-maintenance).

**Savanna** by Kvadrat Aggebo & Henriksen Cat. B

**Application** Upholstery for both domestic and public decoration.  
**Description** 34% polyester, 31% new wool, 26% acrylic, 4% cotton, 3% nylon, 2% linen. Width app. 55 inches (140 cm). Weight app. 680 g/lin.m. Yarn dyed. Colour differences may occur.  
**Abrasion:** App. 45,000 rubs acc. to the Martindale method EN ISO 12947.  
**Lightfastness (ISO) 6-7. Pilling (EN ISO) 3. Fastness to rubbing (ISO) dry 4, wet 4. Flame resistance:** BS 5852 Crib 5 with treatment. BS 5852 part 1 with treatment. BS 5852 part 1 ignition source 0. EN 1021-1/2. NF D 60 013 with treatment. SN 198 898 5.3 with treatment. UNI 9175 11M with treatment. US Cal. Bull. 117-2013. (Copy of test report available).  
**Care** Please see [www.kvadrat.dk/care-and-maintenance](http://www.kvadrat.dk/care-and-maintenance).

**Steelcut 2** by Kvadrat Frans Dijkmeijer and Giulio Ridolfo Cat. C

**Application** Offices, hotels, institutions, domestic use. Great durability.  
**Description** 90% new wool, worsted, 10% nylon. Width app. 55 inches (140 cm). Weight app. 825 g/lin.m. Piece dyed. Foreign fibres may occur in light colours. Colour differences may occur.  
**Abrasion:** App. 100,000 rubs acc. to the Martindale method EN ISO 12947.  
**Lightfastness (ISO) 5-7. Pilling (EN ISO) 3-4. Fastness to rubbing (ISO) dry 4-5, wet 4. Sound absorption (EN ISO 354) 0.65/Class C (flat), 0.80/Class B (waved). Airflow 1014 Pa s/m. Flame resistance:** AS/NZS 1530.3. AS/NZS 3837 Class 2. BS 5852 Crib 5 with treatment. BS 5852 part 1. EN 1021-1/2. IMO FTP Code 2010:Part 8. NF D 60 013. NFPA 260. SN 198 898 5.3 with treatment. UNI 9175 11M. US Cal. Bull. 117-2013. ÖNORM B1 / Q1. (Copy of test report available).  
**Care** Please see [www.kvadrat.dk/care-and-maintenance](http://www.kvadrat.dk/care-and-maintenance).

**Twill Weave** by Kvadrat Jonathon Olivares Cat. C

**Application** Offices, hotels, institutions, domestic use. Great durability.  
**Description** 90% new wool, worsted, 10% nylon. Width app. 55 inches (140 cm). Weight app. 960 g/lin.m. Yarn dyed. Colour differences may occur.  
**Abrasion:** App. 60,000 rubs acc. to the Martindale method EN ISO 12947.  
**Lightfastness (ISO) 5-7. Pilling (EN ISO) 3-4. Fastness to rubbing (ISO) dry 4-5, wet 4-5. Sound absorption (EN ISO 354) 0.70/Class C (flat), 1.00/Class A (waved). Airflow 1430 Pa s/m. Flame resistance:** AS/NZS 1530.3. AS/NZS 3837 Class 3. BS 5852 Crib 5 with treatment. BS 5852 ignition source 3. BS 5852 Part 1. EN 1021-1/2. IMO FTP Code 2010:Part 8. NF D 60 013. SN 198 898 5.3 with treatment. UNI 9175 11M. US Cal. Bull. 117-2013. (Copy of test report available).  
**Care** Please see [www.kvadrat.dk/care-and-maintenance](http://www.kvadrat.dk/care-and-maintenance).

**Zero** by Sahco Cat. C

**Application** Upholstery  
**Description** 65% cotton, 20% viscose, 15% polyester. Width app. 55 inches (140 cm). Weight app. 740 g/lin.m. Colour differences may occur.  
**Abrasion:** App. 70,000 rubs acc. to the Martindale method EN ISO 12947. Shrinkage app. 2%. **Lightfastness (ISO) 5-6. Pilling (EN ISO) 5. Flame resistance:** BS 5852 Crib 5 with treatment. BS 5852 part 1. EN 1021-1/2. (Copy of test report available).  
**Care** Please see [www.kvadrat.dk/care-and-maintenance](http://www.kvadrat.dk/care-and-maintenance).

**Campas 300** by Kvadrat Finn Sködt  
Please see description on Red/Yellow Card